

CHAMP Presentation
January 17, 2013

Ann Lenane, MD
Medical Director, REACH Program

History

- Evaluated in the Pediatric Emergency Dept. for a swollen arm with a small bruise.
- Noted by mother when she returned from work at about 10 PM.
- Baby in care of babysitter, mother's partner and partner's mother during evening.
- May have injured arm taking her out of car seat.
- "Fussy" all evening, but not unusual for this baby.



Accident or Abuse?

Which of the following is most likely?

- Accident
- Abuse

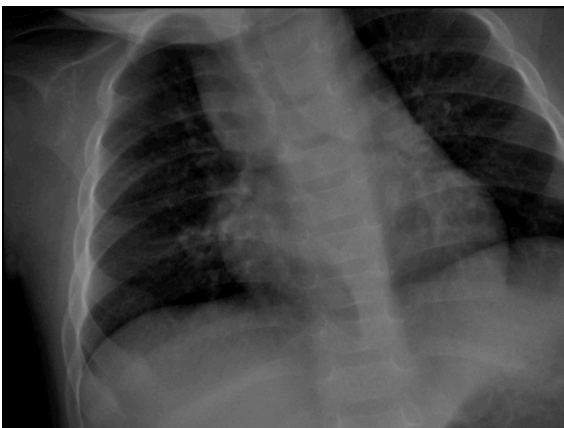
Physical Exam

- Alert, fussy
- Bruises on her right cheek
- Scratches on her left side
- Bruises on her left thigh











Accident or Abuse?

Which of the following is most likely?

- Accident
- Abuse

Key Points

- Any fractures in infants should trigger concern for abuse.
- Humerus fractures in infants should trigger concern for abuse.
- Bruises in infants should trigger concern for abuse.
- Evaluation for abuse in an infant should include a skeletal survey, eye exam and head imaging study.
